

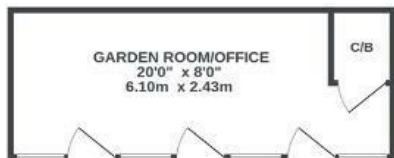
# Dyrham

## BRISLINGTON

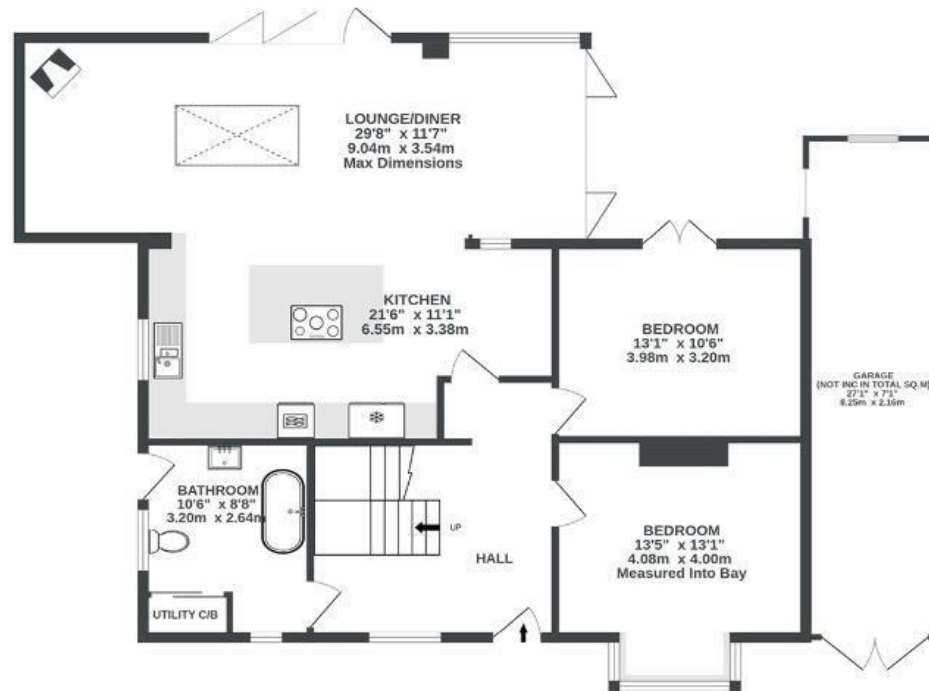
APPROXIMATE FLOOR AREA  
125.8 SQM / 1354 SQFT



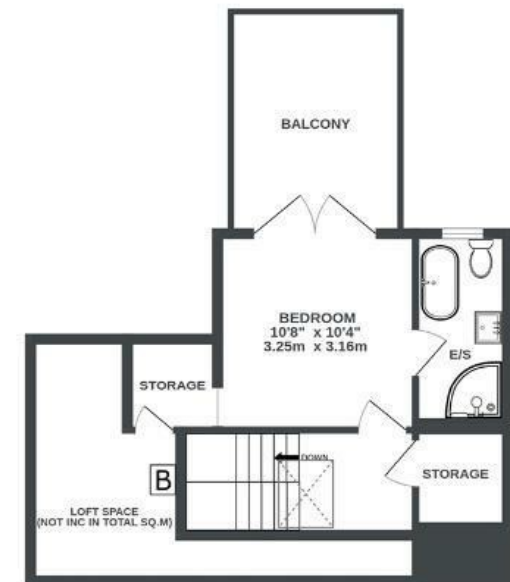
GARDEN ROOM  
0 sq.ft. (0.0 sq.m.) approx.



GROUND FLOOR  
1075 sq.ft. (99.9 sq.m.) approx.



1ST FLOOR  
278 sq.ft. (25.9 sq.m.) approx.



Illustrations are for reference purposes only, measurements are approximate, not to scale.

~~Boardwalk~~

# St. Annes Park

BRISLINGTON, BRISTOL



£750,000



3 Bedrooms



BS4 4DT



2 Bathrooms

*"Our house is surrounded by green, filled with the sound of birds early in the morning and at sunset. The open outlook in every direction, sat on the balcony with tea (or glass of wine) as the sun sets is a very special moment. The starry skies (low light pollution) and quiet is astonishing, just the sound of wildlife, the rustle of the woodland and the distant calling of the tawny owl. Peace is easy to find."*

